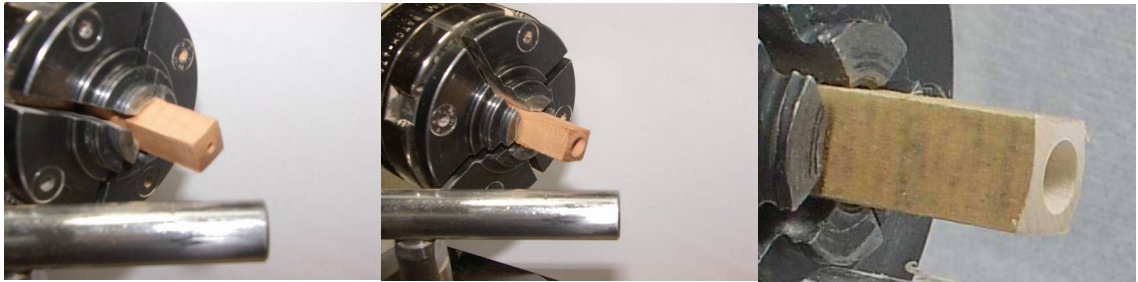


## THE EIGHTEEN STEPS to make a "MAPLE LEAF<sup>®</sup>" style BOBBIN

Step 1: Source the wood. Most people don't consider this step – but it does take up to a day to get one small tree. Note that the trees I use are either storm damaged or must be removed for valid reasons. The tree must then be cut it up into manageable pieces before returning home. Buying lumber? This takes longer as I only use air dried wood for bobbins and ensuring that the lumber is air dried, especially imported species, requires some investigation. I use only air dried wood for bobbins as it is more flexible and stable than kiln dried wood.

Step 2: Cut the blanks out of a piece of tree (log or branch) and allow time to air dry (up to 4 months) when I'm using domestic species. Imported species arrive as dried lumber, so I can skip the drying time.

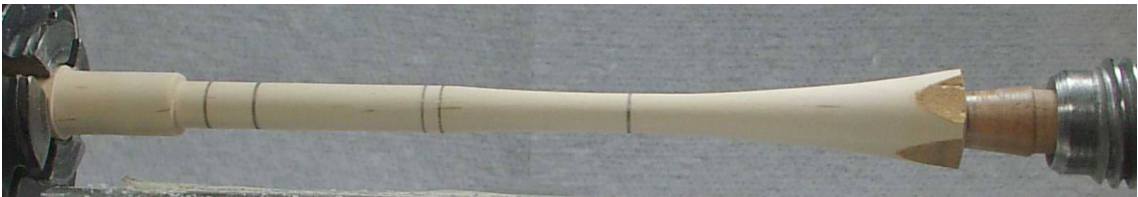
Step 3: Smoothly dome one end, then make a tapered hole for the cone shaped weight



Step 4: Turn the blank round(ish)



Step 5: Turn rough shape and mark transition points with a template



Step 6: Turn grooves at major shape transition points to define further steps



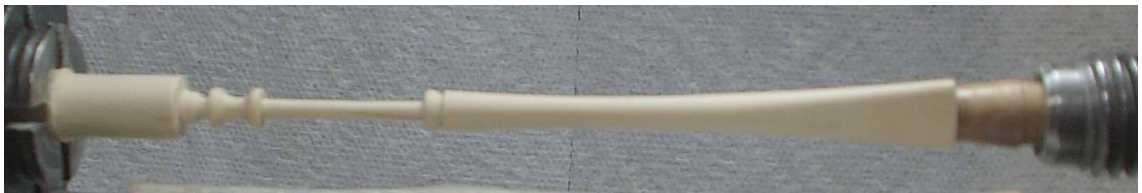
Step 7: Turn the basic shape



Step 8: Turn the neck carefully as it's thin and must be very straight



Step 9: Shape the handle end to a tapered square (don't ask how I do this, as I would like to keep this information to myself for now)



Step 10: Sanding smooth (to 800 grit). No picture – who wants to see sawdust...

Step 11: Part off the bobbin (this means to cut the bobbin off at the tip end)

Step 12: Glue the cone shaped (lead free) weight into the hole at the bobbin's handle end

Step 13: The piece left behind when parting off the bobbin in step 11 (see photo, step 9) is shaped to fit the hole in the handle end, glue is applied and bobbin is pressed onto this plug for a tight fit. Picture below shows plug nearly finished



Step 14: Cut bobbin with plug attached off stub in lathe chuck. The turning portion of the work is now completed.



- Step 15: Sand both ends of bobbin (to 800 grit).
- Step 16: Apply finish. I use a food safe, penetrating oil finish that cures hard, strengthens the wood, allows the bobbin to be 'washed' without raising the wood grain and provides protection against soiling.
- Step 17: Polish and clean bobbin. Bobbin is polished to high lustre, then 'washed' with denatured alcohol to remove the 'shine' without dulling the polishing. If you like a bobbin that has a high polish, just use a soft flannel cloth to bring back the shine.
- Step 18: Package and ship the order. All bobbins are packaged, along with an information sheet, in a plastic envelope for protection against shipping environments. Up to two envelopes with 12 bobbins in each are then put into a letter size padded envelope, addressed and mailed to you. Large orders are packaged in boxes.

What about bobbins with decoration or stripes?

Applying artwork decoration is another 5 step process, artwork is added to completed bobbins after step 17 above.

Applying stripes is started at step 7, when the grooves are cut in. Colour is added after step 10 is completed.